



rishihood
university

Campus Culture


A Presentation by
Sampadananda Mishra
Dean- Culture, RU



- A University is not only a **source of national culture**, but also itself is an **existing form of culture**. Therefore, leading culture must be one of its most important responsibilities..
- **Cultural inheritance and innovation:**
 - >Must become an integral part of the University mission
 - >Must become the driving force for the university development
 - >Must emerge as a support to the national progress.

Institutional Culture includes all rules and regulations with regard to the smooth operation of the institution and it takes care of the gradual development of the campus culture.



A faint, light-colored illustration in the background shows a person's silhouette holding a glowing lightbulb. The lightbulb has several rays emanating from it, symbolizing an idea or enlightenment. The person is flanked by two other silhouettes, suggesting a community or group.

Spiritual Culture, the heart and soul of the campus culture, facilitates the fulfilment of the ideology and vision of the University. It includes the **psychological and aesthetic values, discipline** maintained by the members of the university.

Academic Culture (the backbone of Campus Culture)

This constitutes:

- Academic Outlook/worldview
- Academic Ethics
- Academic Environment
- Academic Spirit
- Academic Methodology
- Science Theories
- Behaviour Norm
- Academic Activities

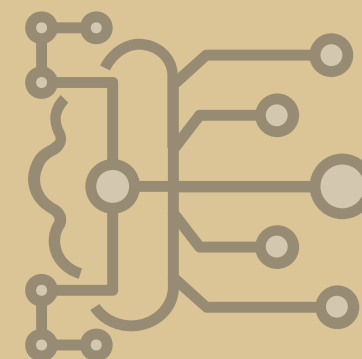
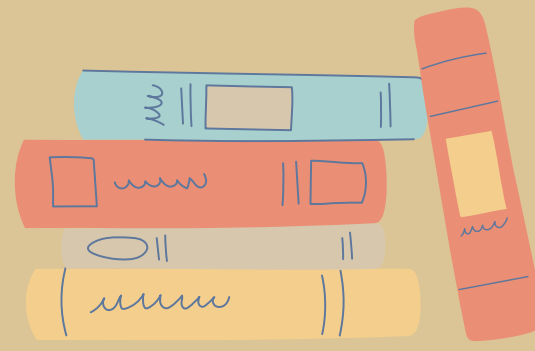
All these, when pervaded to all aspects of Campus Culture, enhance the construction of campus culture.

If there is no first-grade academic culture, it is very unlikely for us to cultivate first-grade campus culture.



Material Conditions & Material Assurance:

- The material conditions for building a good academic culture are books, information data, experimental instruments, network systems, research sites, financial support and so on. Without these, cultivation of high quality academic culture will not be possible.



- The university must emerge as an advanced centre that is intent on striving for the truth, pursuing science, advocating academia, raising spirit, and acting as an honest guardian of its own spiritual homeland.
- Ultimately, the University should influence the whole society with advanced ideas, refined culture and lofty character, and lead social development. That is how we can emerge as the Social Impact University (as promised to the world).
- The University must make sincere efforts to increase cultural confidence, improve cultural consciousness, and stick to its vision and mission by cultivating generations of talents to practise, inherit and innovate culture, thus satisfying the eternal need of nation, society and people.

- The courses offered by the university also can play an important role in building the University culture. For example, focusing on nation-building and character-building and man-making, Rishihood must conduct courses which are most aligning with this ideology.
- It is important for all RU members to be culture conscious. To inculcate the values which can help all developing love for one's Nation and its cultural heritage, spiritual wisdom, philosophy, and above all the spirit of the Nation.

- Respecting the subjectivity of students and exerting it fully in activities of campus culture where the students are encouraged to express their feelings for nature, life and society by experiencing the beauty of story, music, emotion and dancing and many other similar activities.
- Building campus culture is a collective effort where all members must come forward harmoniously to contribute positively for its construction.
- The impact of campus culture must reflect in all activities of the University.



rishihood
university



धन्यवादः

Thank You!

Merci!